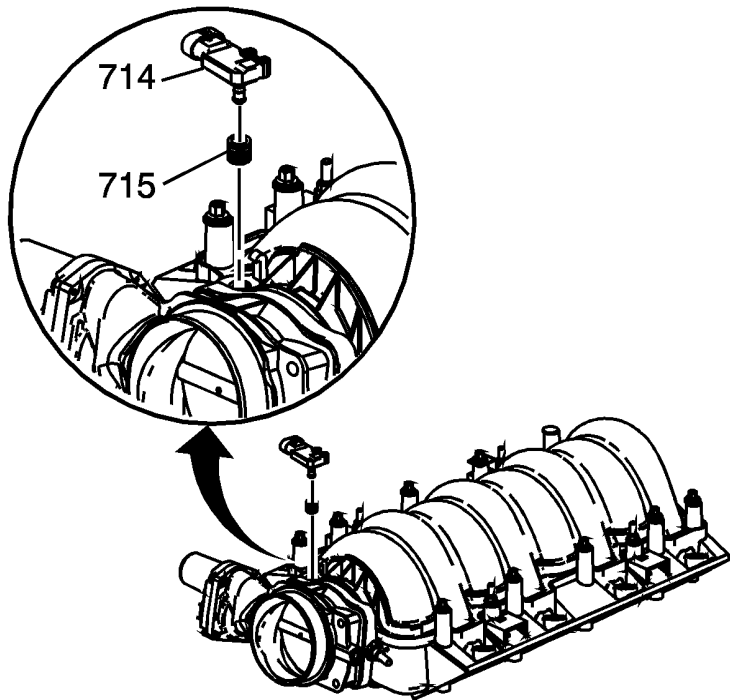


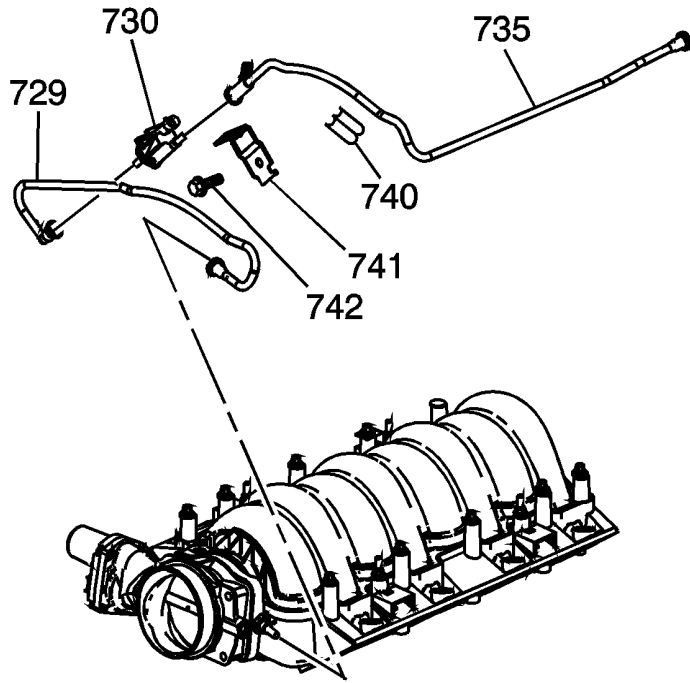
Document ID# 1555039  
2006 Chevrolet Corvette

## Intake Manifold Removal

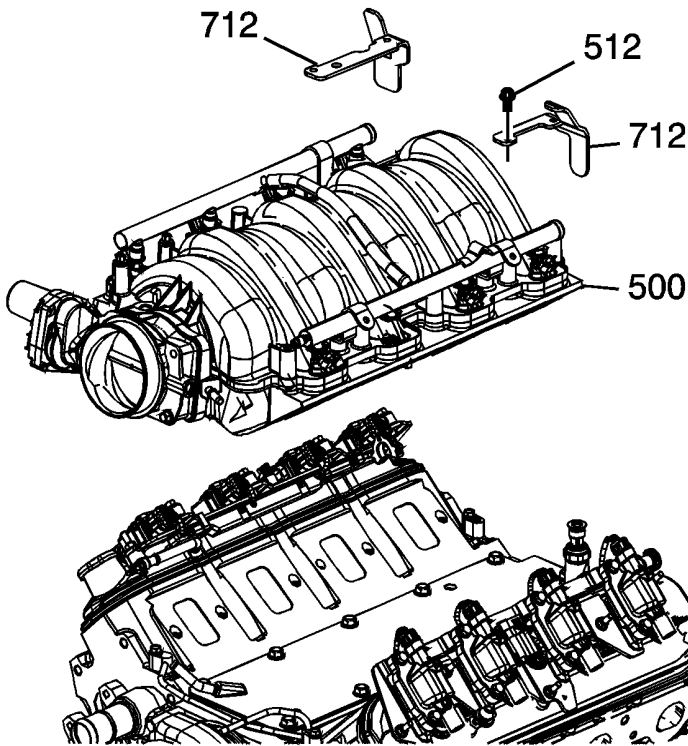


**Important:** The intake manifold, throttle body, fuel injection rail, and fuel injectors may be removed as an assembly. If not servicing the individual components, remove the manifold as a complete assembly.

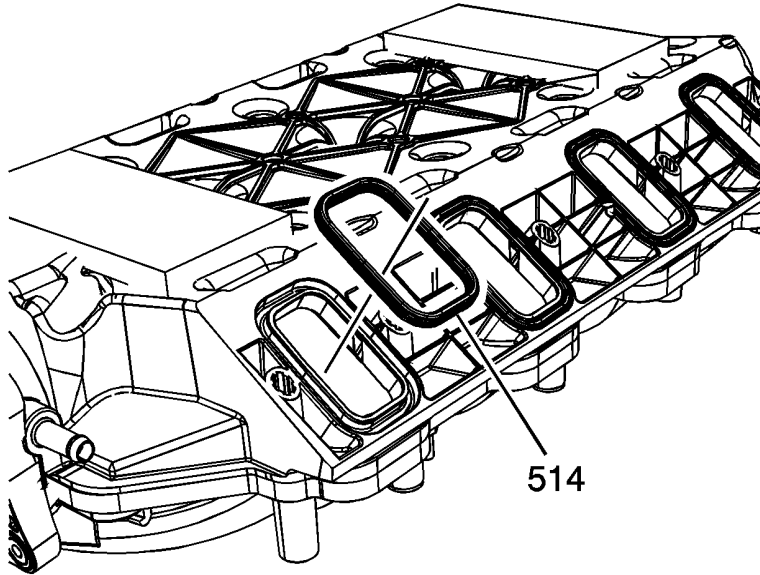
1. Remove the manifold absolute pressure (MAP) sensor (714).
2. Remove the seal (715) from the sensor, as required.



3. Remove the evaporative (EVAP) emission clip (740), bolt (742), bracket (741), canister purge solenoid valve (730), and tubes (729, 735).



4. Remove the intake manifold bolts (512) and fuel rail stop brackets (712).
5. Remove the intake manifold (500).



6. Remove the intake manifold gaskets (514).
7. Discard the intake manifold gaskets.

---

**Document ID# 1555039**  
**2006 Chevrolet Corvette**